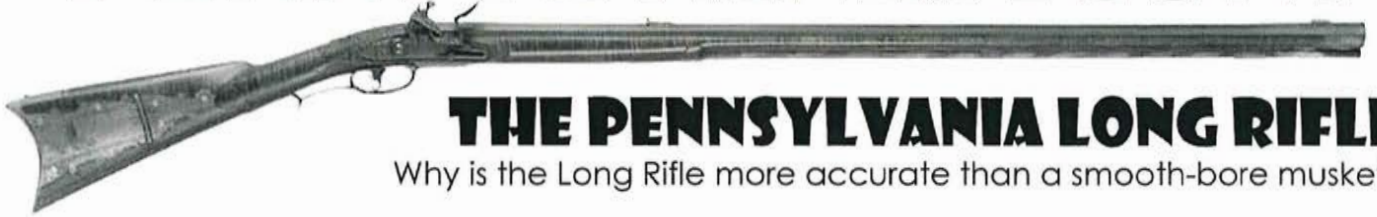




The State Museum of Pennsylvania

PENNSYLVANIA HISTORICAL AND MUSEUM COMMISSION

PENNSYLVANIA ICONS



THE PENNSYLVANIA LONG RIFLE

Why is the Long Rifle more accurate than a smooth-bore musket?

MUTUAL TRUST



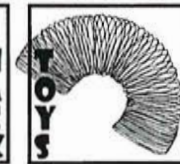
Find the case that contains the Wampum Belt and the painting "Penn's Treaty" by Edward Hicks. Both of these pieces depict the same event. Describe some ways the Europeans and Native Americans saw this event.

What is the same?

What is different?



PRODUCTS FROM PA



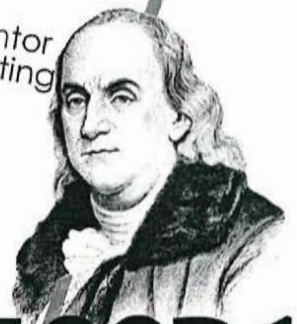
Check out the Pennsylvania Products Wall!
Which product do you find interesting? Why?

DID YOU KNOW?

Pennsylvanian Benjamin Franklin is famous for the "kite & key" experiment and his work with electricity.

He was also the inventor of many other interesting things?

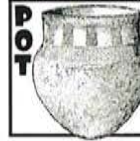
- Bifocals
- Swim Water Fins
- Long Arm
- Lightning Rod
- Odometer



FLOOR 1

EXPLORING ARCHAEOLOGY

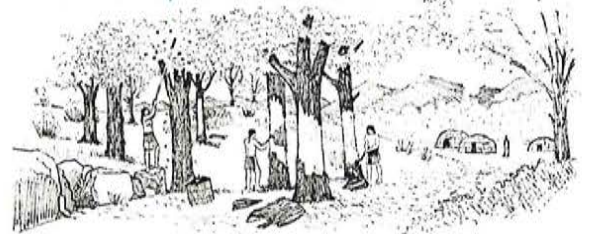
What materials did Native Americans use to make the following objects?



DELAWARE LIFE

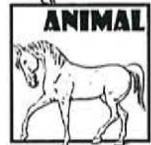
Name 2 ways the Delaware Indians lives were **similar** to your own.

Name 2 ways the Delaware Indians lives were **different** from your own.

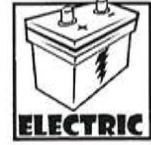


POWERING PENNSYLVANIA

Name an object in the gallery that run off of these sources of power.



windmill



DID YOU KNOW?

The Conestoga Wagon was invented in Lancaster County. The trails that the Conestoga's followed eventually became the Nation's first Turnpike.

The Conestoga did not carry people. It was the tractor trailer of its time. They carried cargo from New York to Virginia, but not west over the Appalachian Mountains.

OBSERVE THE ENVIRONMENT

As you explore Mammal Hall, pick a diorama and observe the habitat. What can you see?

What diorama did you pick?

What type of habitat is it? (ex. forest, field, mountain, etc.)

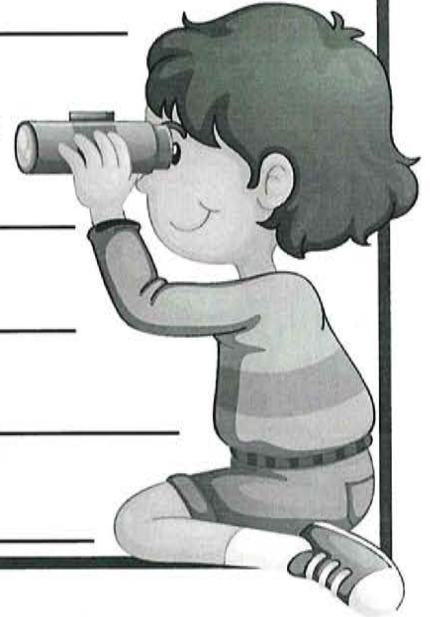
What time of day is it?

What season is it?

What other animals can you find?

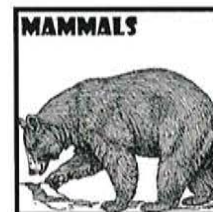
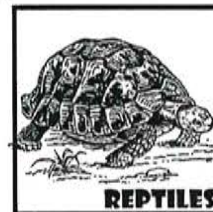
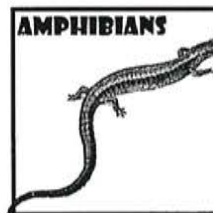
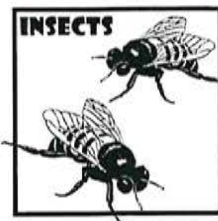
What plants and trees can you find?

What is happening in the scene?



PENNSYLVANIA'S WILDLIFE TODAY

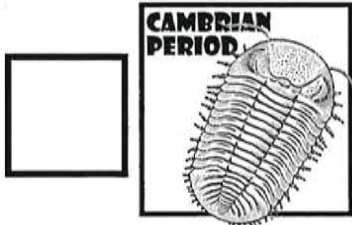
Today, Pennsylvania has a large diversity of animals living together throughout many varied habitats. Find an example of each type of animal in Ecology Hall!



FLOOR 3

LIFE THROUGH TIME

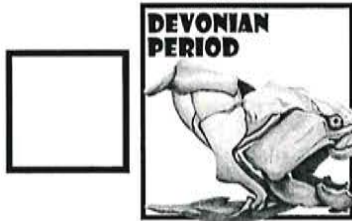
Match the animal to the description of the period in which it lived. Place the appropriate letter in the box.



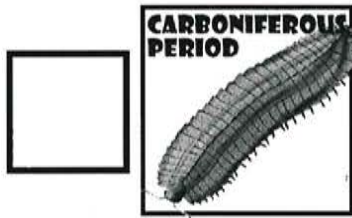
This armored animal is the most common fossil of this age.



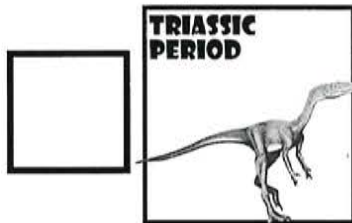
Reefs flourished in the warm shallow seas and were made of colonies of these animals.



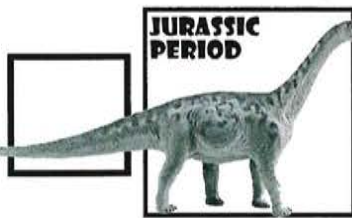
This is the age of fish. This huge predator's head is made of large bony plates.



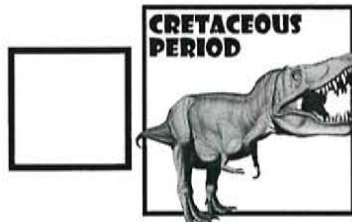
High oxygen levels helped this millipede grow over eight feet long.



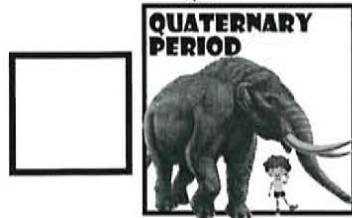
This reptile is one of the earliest known dinosaur.



This large herbivore can grow to be bigger than a school bus.



This "king" of the carnivores terrorizes all the creatures of the period.



This is the age of Mammals. This proboscidean roams the landscape.

A. Coral

B. Mastodon

C. Camarasaurus

D. Tyrannosaurus Rex

E. Trilobite

F. Dunkleosteus

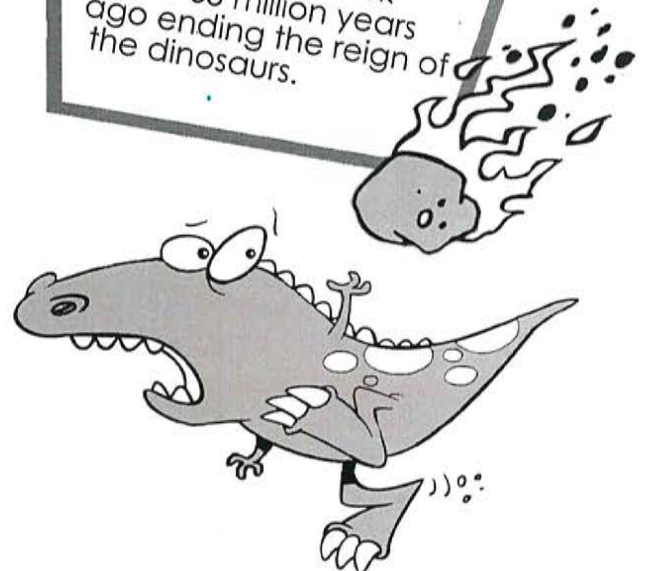
G. Arthropleura

H. Coelophysis

DID YOU KNOW?

There have been at least five mass extinctions in the history of life on Earth. The largest took place at the end of the Permian Period. 90-96% of all life on Earth died.

The most famous was the K-T Extinction. It took place 65 million years ago ending the reign of the dinosaurs.



FLOOR 3